



# Athena Tutorial and Practice Exam Readme File

Pearson, the Pearson VUE logo, and VUE are trademarks, in the U.S. and/or other countries of Pearson Education, Inc. or its affiliate(s). All other products, services, or company names mentioned herein are claimed as trademarks and trade names by their respective companies.

© 2005 Pearson, Inc. All rights reserved.

## Welcome

---

Welcome to the Pearson VUE Tutorial and Practice Exam. The Tutorial and Practice Exam allow you to try out the software that will administer your exam. Samples show a variety of question types, one or more of which will be used in your exam. This document explains how to install and run the Pearson VUE Tutorial and Practice Exam.

## Minimum System Requirements

---

Before installing the Pearson VUE Tutorial and Practice Exam, make sure your computer meets the system requirements listed below. The software is not designed to install and run properly on systems that do not meet these requirements.

- Pentium III PC or compatible, 1 GHz (Pentium 4, 2 GHz recommended). Macintosh computers are not supported.
- 512 MB of RAM
- 60 MB of empty hard disk space
- Microsoft Windows XP or 2000 (home or professional version), English edition. The content appears only in English.
- Microsoft Internet Explorer 5 or higher
- Super VGA (800 x 600) or higher resolution monitor (1024 x 768 recommended), with high color (16 bit)
- Microsoft compatible mouse or pointing device
- Internet access is not required when viewing the tutorial or demonstration tests.

---

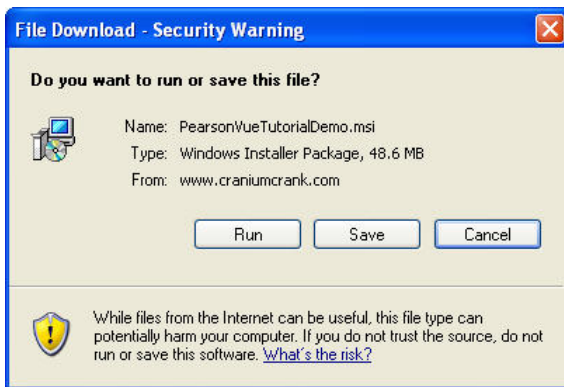
## Install the Pearson VUE Tutorial and Practice Exam Software

The installation process is quick and easy. Just follow the instructions on the computer screen. The process is also outlined for you here.

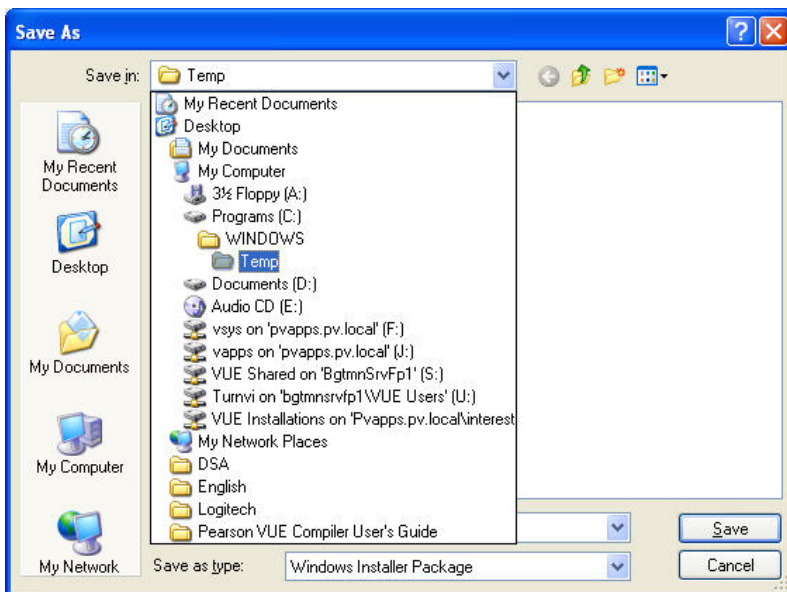
1. Click the **Download Pearson VUE Tutorial and Practice Exam** link on the **Test Taker Services** tab.



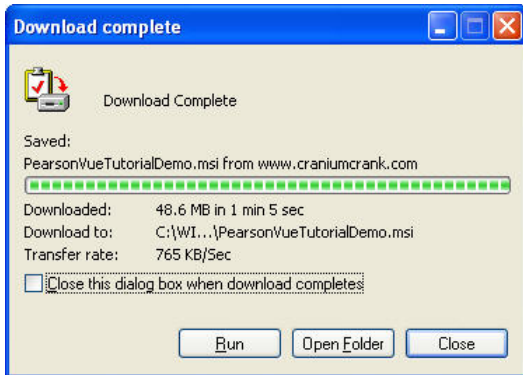
2. Click the **Save** button when the **File Download** window displays.



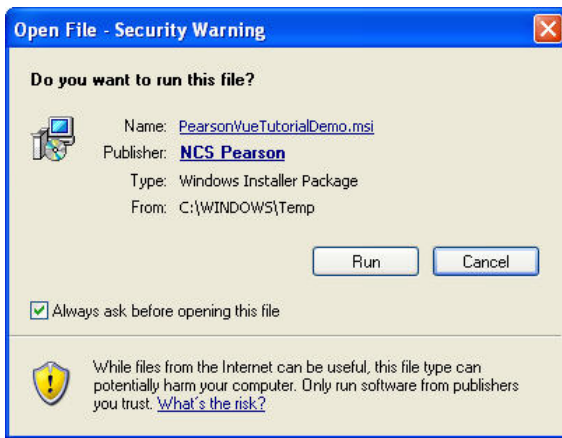
3. The **Save As** window displays. Navigate to the **Temp** directory and click the **Save** button.



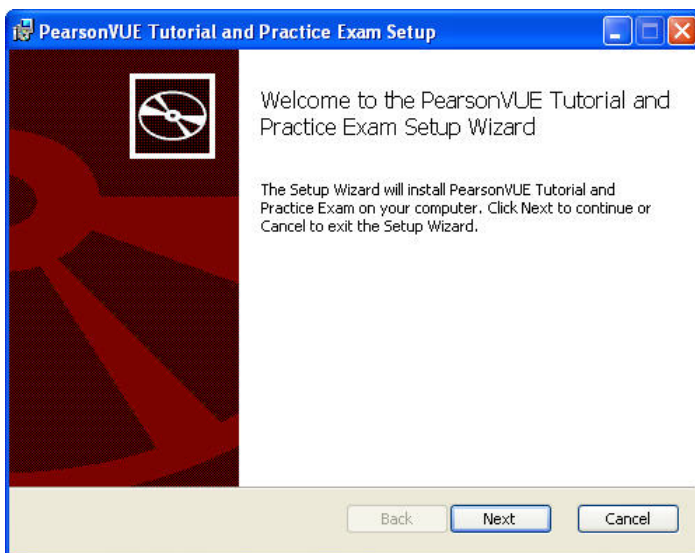
- When the file finishes downloading, the **Download complete** window displays. Click the **Open Folder** button.



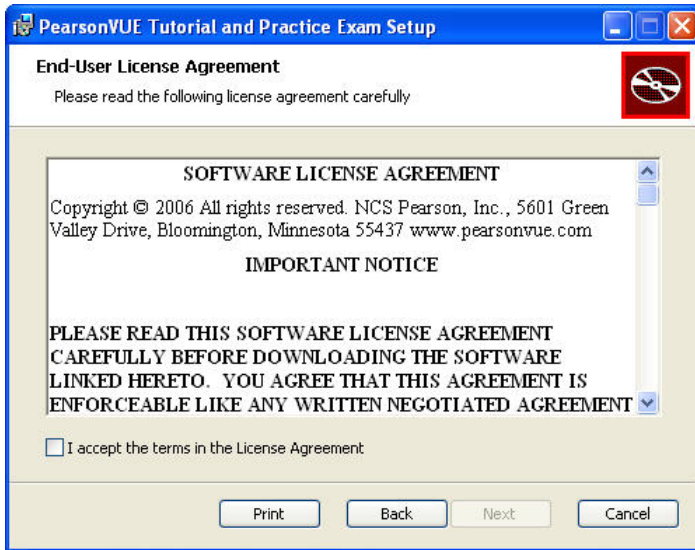
- Double-click the **PearsonVueTutorialDemo.msi** file. The **Security Warning** screen displays.



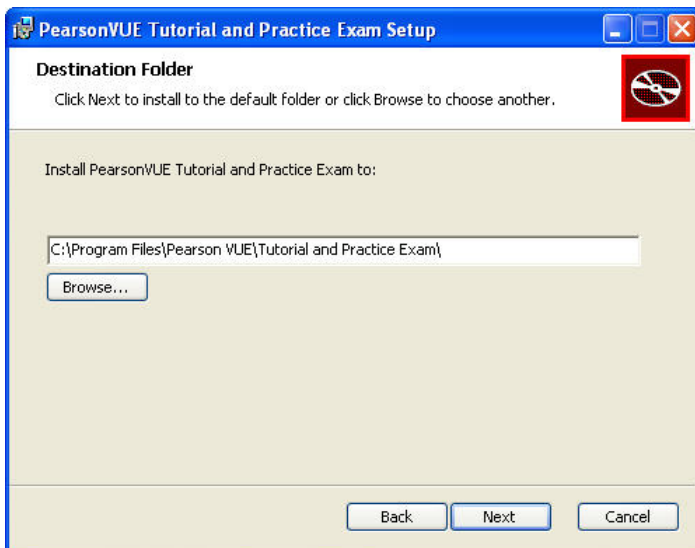
- Click **Run**.
- The **Install Shield Welcome** screen displays. Click **Next**.



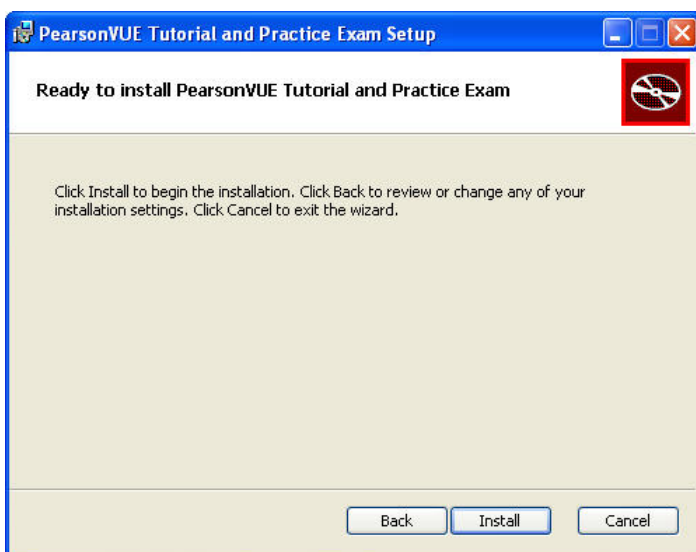
8. The **License Agreement** screen displays. Read the agreement. You can read the agreement on your screen or click **Print** to print a copy.



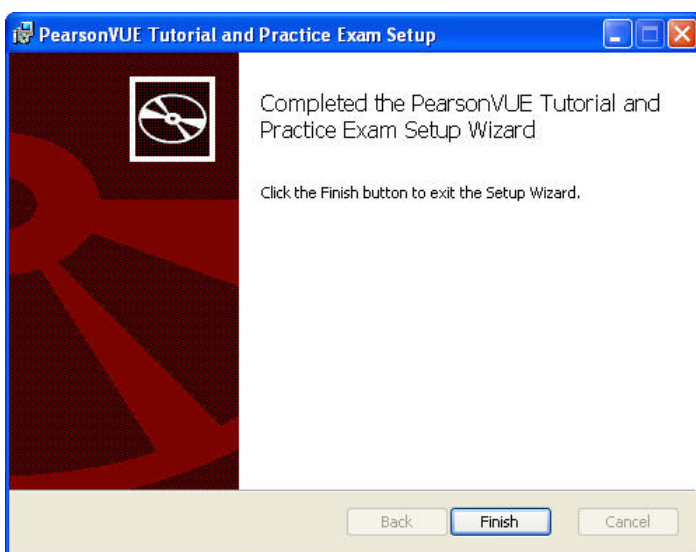
9. If you agree to the terms, select **I accept the terms of the License Agreement** and click **Next**.  
(If you do not agree to the terms, click **Cancel** and the Pearson VUE Tutorial and Practice Exam will not load.)
10. The **Destination Folder** screen displays. We recommend that you keep the default location for the tutorial. Click **Next**.



11. The **Ready to install** screen displays. Click **Install**.



12. The tutorial and practice exam installation completes. Click **Finish**. The installation program ends.



The Tutorial and Practice Exam install created a shortcut on your desktop and a shortcut in the Windows Start menu.

## Run the Pearson VUE Tutorial and Practice Exam

---


To run the tutorial and practice exam software manually, do one of the following:

- Click the Windows **Start** button and select **All Programs | Pearson VUE | PearsonVUE Tutorial and Practice Exam**.
- Double-click the **Pearson VUE Tutorial and Practice Exam** icon on your computer's desktop.

---

### Run Tutorial

1. To get the most out of the tutorial and practice exam, go through the **Tutorial** section first. It will help you become familiar with the testing software that will be used for your exam. Click the **About Pearson VUE exams** link.



### Pearson VUE Tutorial and Practice Exam


The first part of the tutorial is "About Pearson VUE Exams." This section illustrates all of the functions that you may be asked to use when taking a computer-based test including how to answer questions, change answers, and review questions.

About Pearson VUE exams

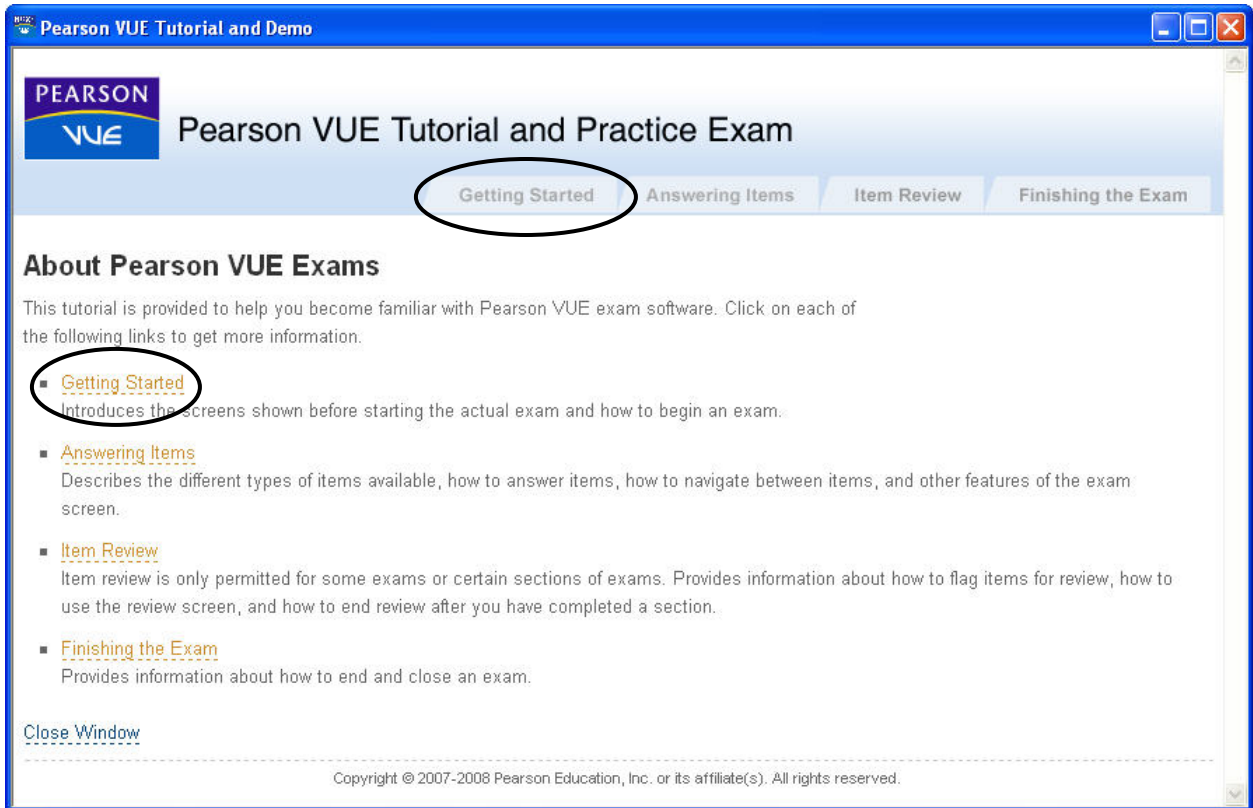
The second part of the tutorial is the "Practice Exam". This will give you a hands on opportunity to become familiar with the operations of computer-based examinations.

The content of the questions in the practice exam is not specific to any one program, but it does provide the opportunity to use all of the functions to enter responses, view visuals and exhibits, scroll pages and review items. Examples of each type of function are shown. Not all functions are necessarily used in all "real-life" exams.

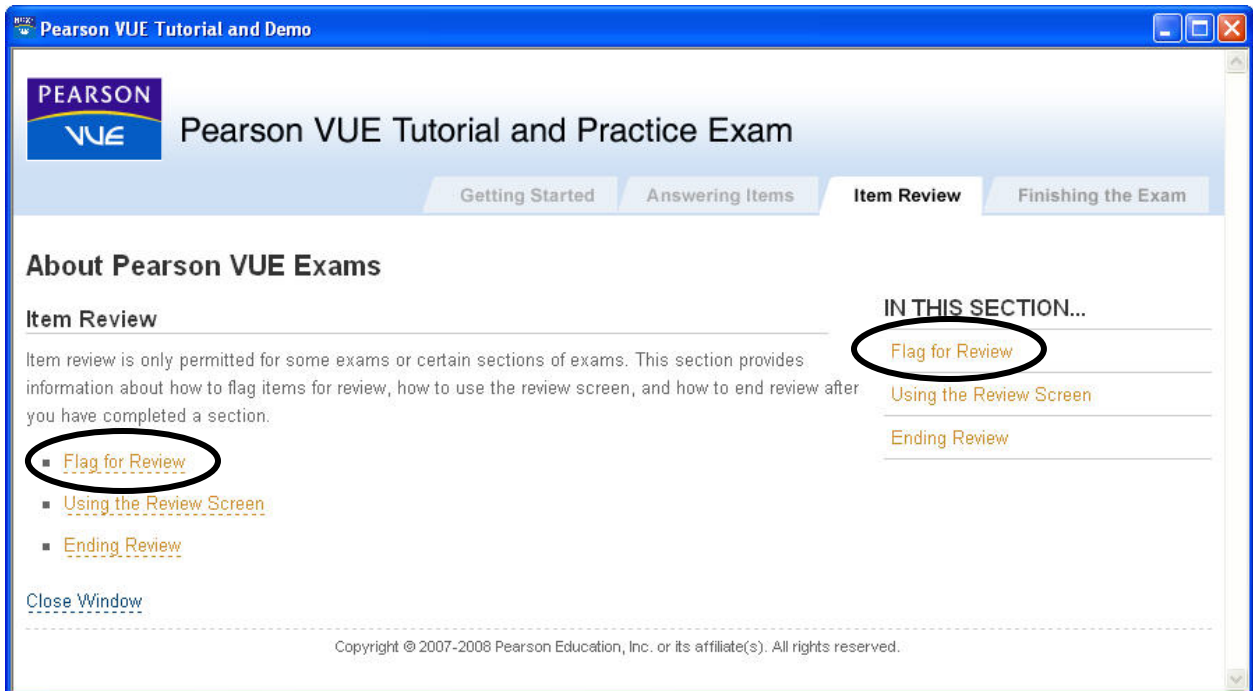
Practice Exam

 Exit

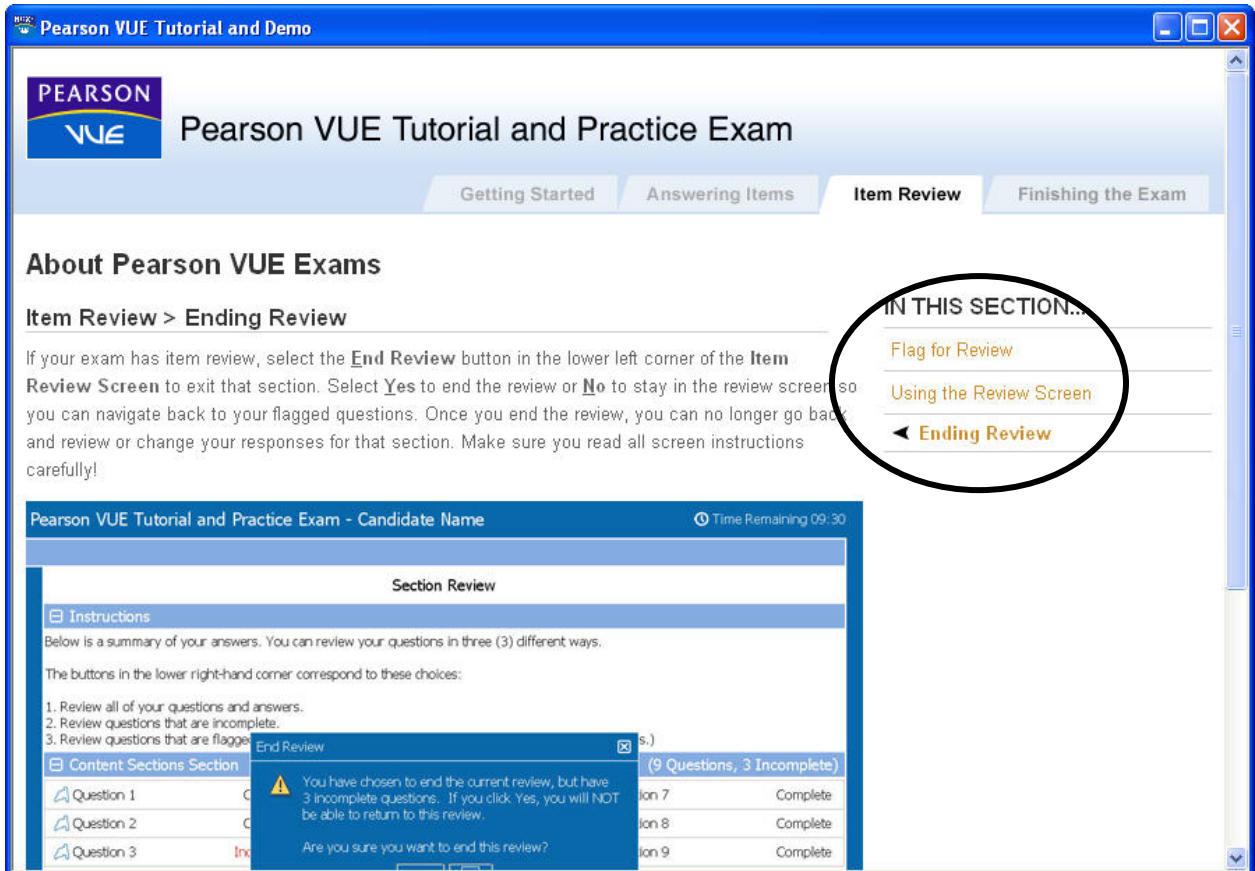
2. The tutorial splash screen displays. Click a **section link** or click the desired **tab** to display a tutorial section.



3. The selected section splash screen displays. Click the **topic link** on the left or the **In this section** link on the right to display the desired topic.



4. Use the **In this Section** links to scroll through the topics in that section of the tutorial.



5. You can close the tutorial at any time. Scroll down to the lower left corner of any tutorial topic and click the **Close Window** link. The Tutorial and Practice Exam splash screen redisplay.

---

## Run Practice Exam

1. Click the **Practice Exam** link.

The **Practice Exam** section allows you to become familiar with the operations of computer-based examinations. The content of the questions in the practice exam is not specific to any one program, but it does provide the opportunity to use all of the functions to enter responses, view visuals and exhibits, scroll pages and review items. Examples of each type of function are shown. Not all functions are necessarily used in “real-life” exams.

2. Navigate through the exam using the navigation buttons in the lower right corner of the screen.
3. Click the **End Exam** button if you wish to terminate the Practice Exam prior to completing the exam.

---

## Return to the Main Menu

To return to the main menu, take one of these actions:

- In any About Pearson VUE Exams subsection, click the **Close** button in the upper right corner of the window.
- Click the **Close Window** link in the lower left-hand corner of any tutorial page.
- When working in Practice Exam, click the **End Exam** button to end the demo exam. You are asked to confirm your choice and then you are returned to the main menu.

---

## Exit the Pearson VUE Tutorial and Practice Exam Software

1. To close the entire tutorial and practice exam application, click the **Exit** button in the lower left corner of the main menu.
2. Click **Yes** to exit the tutorial and practice exam.

